



53207 Thrust ball bearings, single direction

- Popular item

Thrust ball bearings, single direction

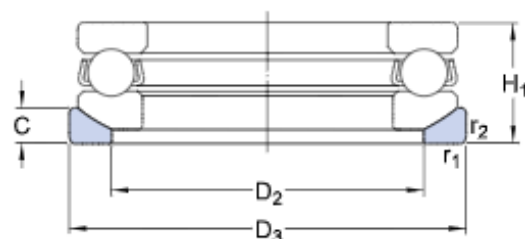
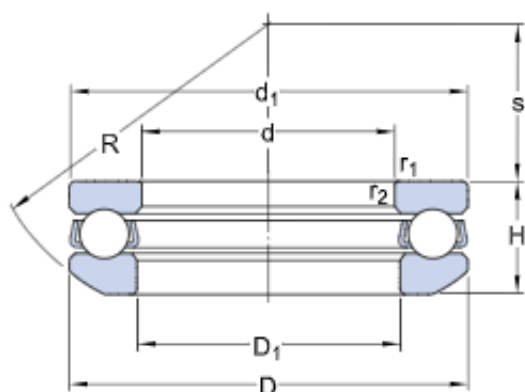
Bearing data

[Tolerances,](#)
table 1

Bearing interfaces

[Seat tolerances for standard](#)
[conditions,](#)
[Tolerances and resultant fit](#)

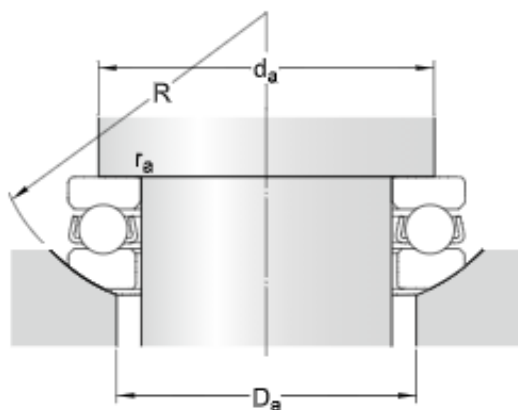
Technical specification



DIMENSIONS

| | | |
|------------------|-----------|---|
| d | 35 mm | Bore diameter |
| D | 62 mm | Outside diameter |
| H | 19.9 mm | Height |
| H ₁ | 22 mm | Height bearing including seat washer |
| d ₁ | ≈ 62 mm | Outside diameter shaft washer |
| D ₁ | ≈ 37 mm | Inner diameter housing washer |
| D ₂ | 48 mm | Inner diameter sphered seat washer |
| D ₃ | 65 mm | Outside diameter sphered housing washer |
| C | 7 mm | Height sphered housing washer |
| R | 50 mm | Radius sphered housing washer |
| s | 24 mm | Centre height housing washer sphere |
| r _{1,2} | min. 1 mm | Chamfer dimension washer |

ABUTMENT DIMENSIONS



d_a min. 51 mm Abutment diameter shaft

D_a max. 48 mm Abutment diameter housing

r_a max. 1 mm Fillet radius



CALCULATION DATA

| | | |
|-------|-------------|---------------------------|
| C | 35.1 kN | Basic dynamic load rating |
| C_0 | 73.5 kN | Basic static load rating |
| P_u | 2.7 kN | Fatigue load limit |
| | 4 000 r/min | Reference speed |
| | 5 600 r/min | Limiting speed |
| A | 0.028 | Minimum load factor |

MASS

| | |
|---------|---|
| 0.28 kg | Mass bearing (including seat washer where applicable) |
|---------|---|

ASSOCIATED PRODUCTS